


NPWirelessx Setup Guide for Win7

Overview

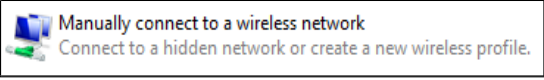
NPWirelessx is aimed at providing a seamless and secure access to the campus wireless network. It supports seamless connection and users need not have to authenticate for network access each time they login to their system

Configurations

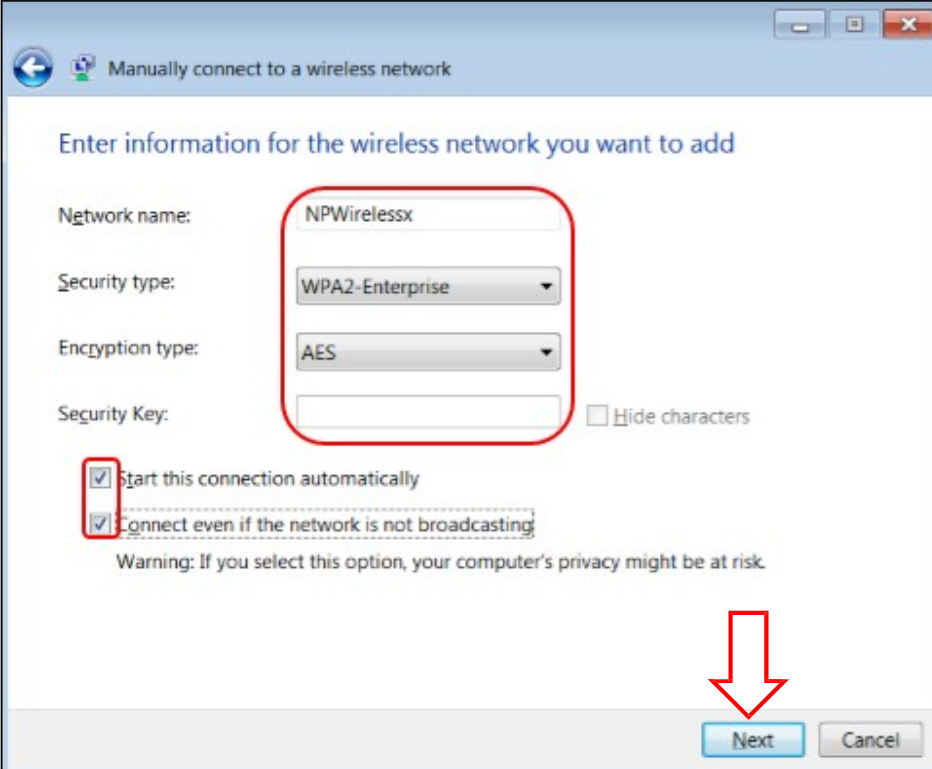
Step 1 Point to the  icon on the bottom right and right mouse click on it.

Step 2 Click on the [Open Network and Sharing Center](#).

Step 3 Select [Set up a new connection or network](#)

Step 4 Click and select the . Click **Next** button.

Step 5 Type in the fields and check the boxes as shown below. Click **Next** button.



Manually connect to a wireless network

Enter information for the wireless network you want to add

Network name: NPWirelessx

Security type: WPA2-Enterprise

Encryption type: AES

Security Key: Hide characters

Start this connection automatically

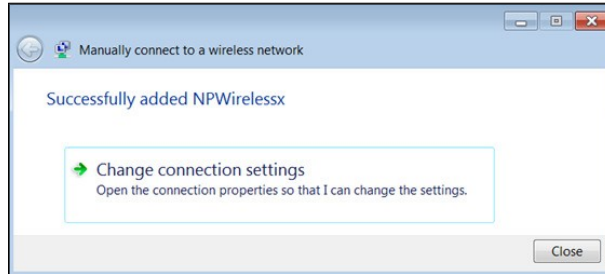
Connect even if the network is not broadcasting

Warning: If you select this option, your computer's privacy might be at risk.

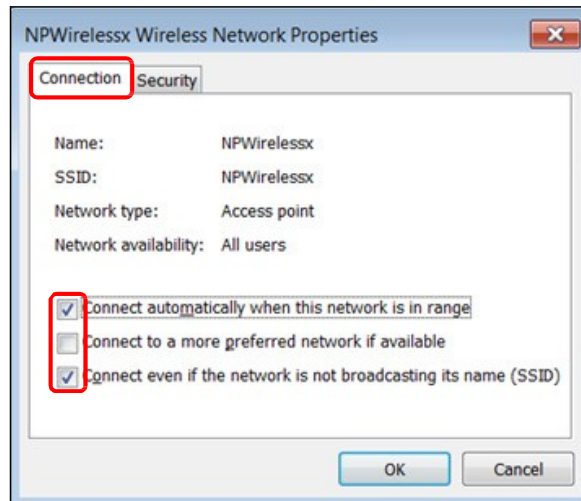
Next Cancel

NPWirelessx Setup Guide for Win7

Step 6 Click on the **Change connection settings**.

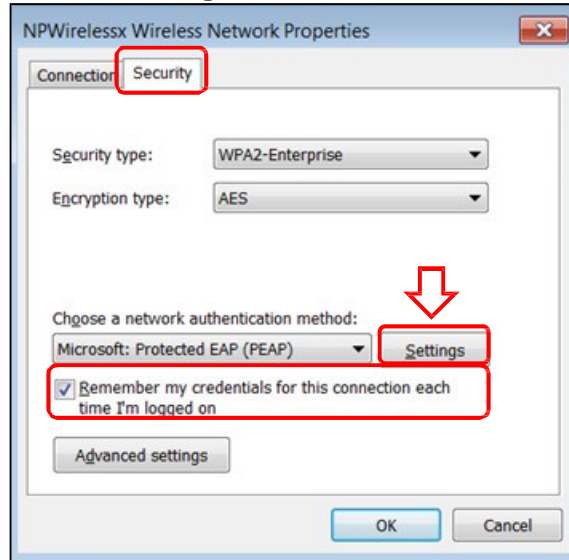


Step 7 Go to **NPWirelessx Wireless Network Properties**, select the **Connection** tab and check the boxes as shown below.

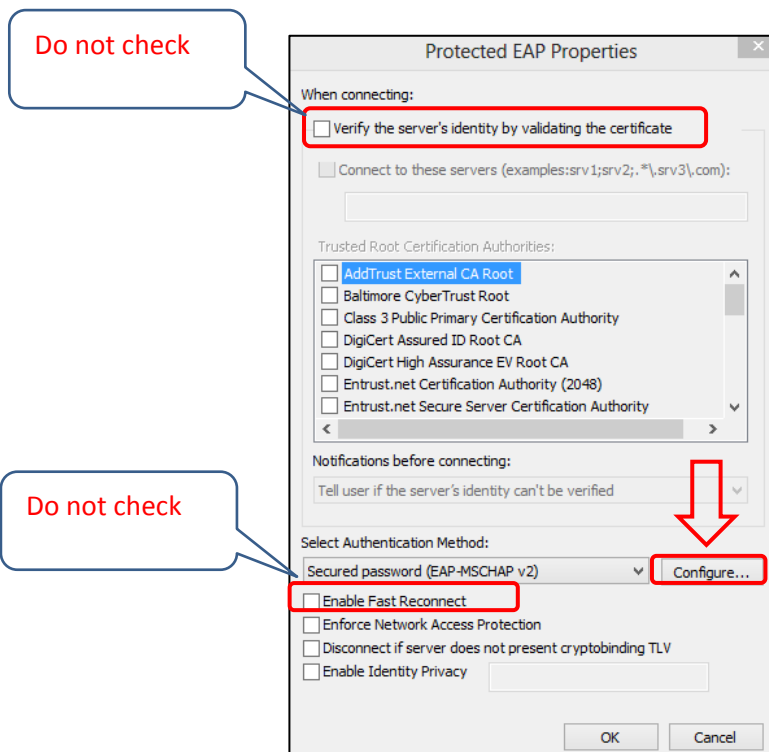


NPWirelessx Setup Guide for Win7

Step 8 Now select the **Security** tab, and select the settings as shown below. Then click on the **“Settings”** button.



Step 9 Uncheck all the boxes as shown below. Then click in the **Configure...** button.



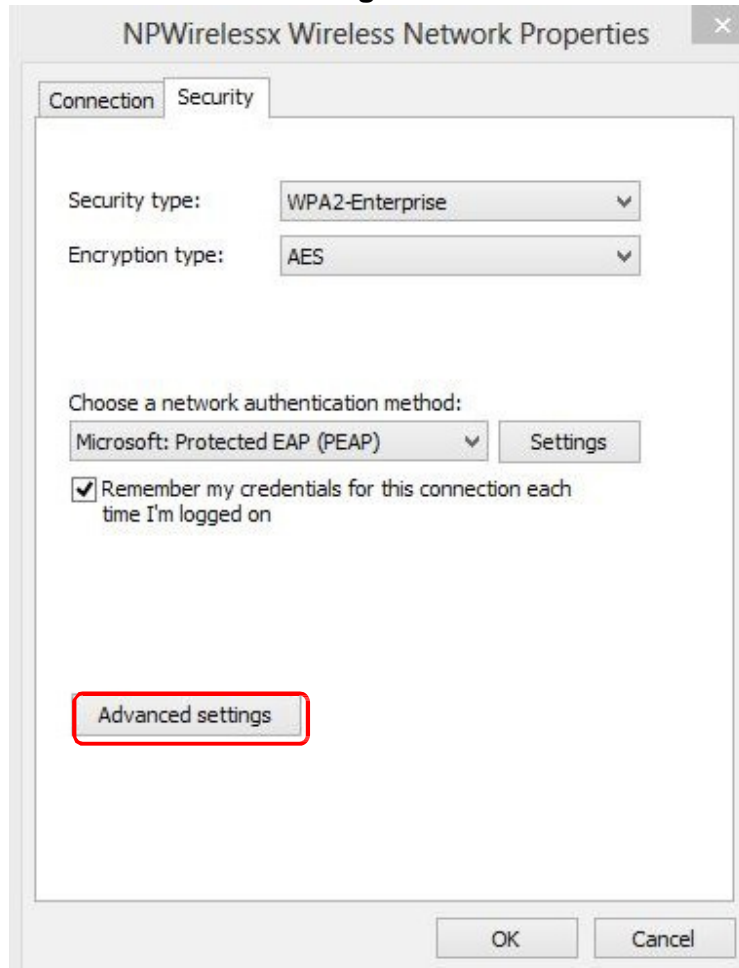
NPWirelessx Setup Guide for Win7

Step 10 Uncheck the **Automatically use my Windows...** and click **OK**.



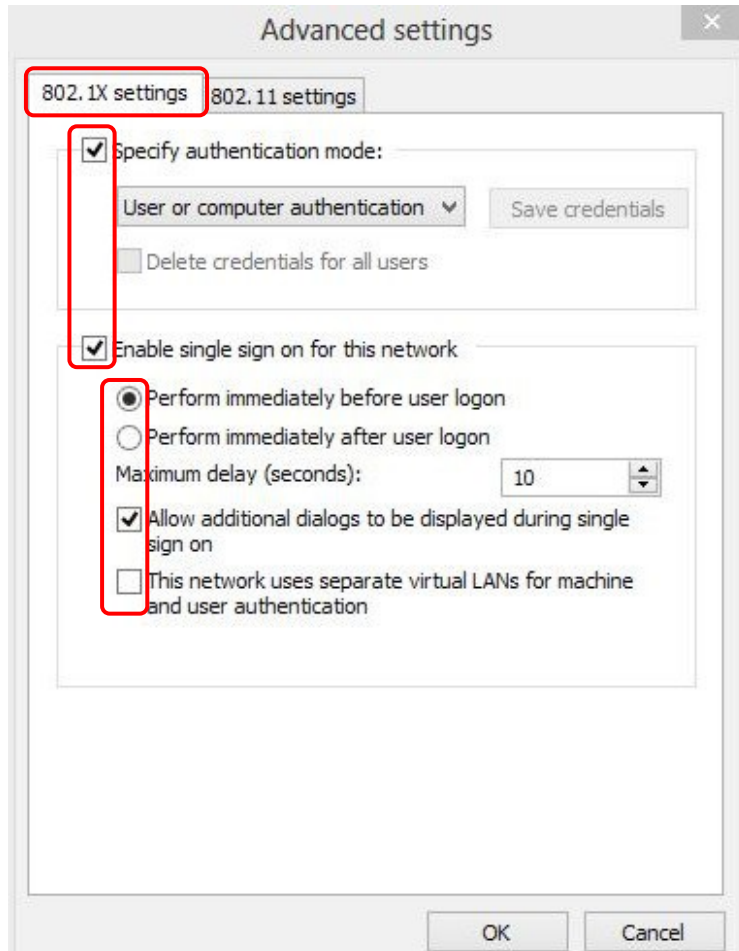
After clicking OK, it will return to the window in Step 9. Click OK, then proceed to Step 11.

Step 11 Proceed to **Advanced settings** now.



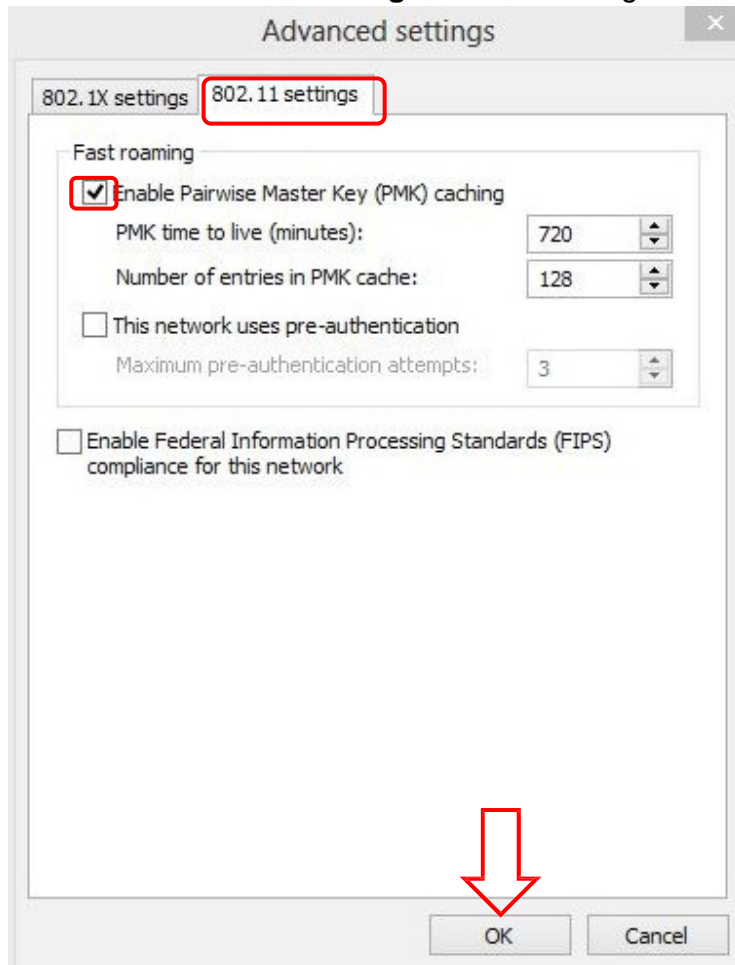
NPWirelessx Setup Guide for Win7

Step 12 Select the **802.1X settings** tab.
Check the boxes as shown below.




NPWirelessx Setup Guide for Win7

Step 13 Now click on the “802.11 settings” tab and configure as shown below.



Step 14 When finished, close all the pop up windows by clicking OK button.

Step 15 Click on the  again.

NPWirelessx Setup Guide for Win7

Step 16 Click on the **Connect** button of NPWirelessx.



Step 17 In this step, you will enter your NPNet ID and password.

Staff

For user name, enter **npnet** followed by your NPNet ID.

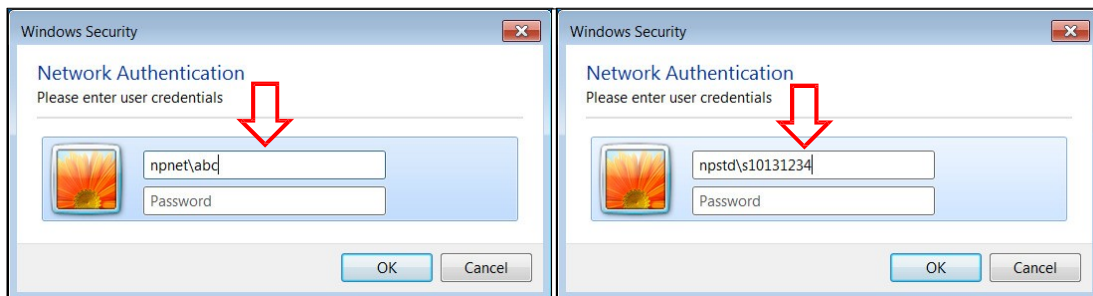
If your NPNet ID is abc, enter
npnet\abc

Students

For user name, enter **npstd** followed by student ID.

If your student ID is 10131234A, enter
npstd\s10131234

Do not enter the last letter of your student ID.



NPWirelessx Setup Guide for Win7

Step 18 You can now surf the net if you have connected to NPWirelessx successfully.

If you require assistance with NPWirelessx configuration, you may approach Helpdesk at Blk 27 #01-01 or SMS to 90300263.

Alternatively, please write to:

Students - Dora.ITCare@np.edu.sg with your **Student Number, Full Name, Course of Study** and **Contact Number**

Staff - Support@np.edu.sg

====The End====